

# Your Transition to Farnborough 6th

*Sent to you from*



# WELCOME



Our working areas are quiet and less crowded than the bigger LRCs



Study Support is in Bagnall Building, next to Registry, and on the same corridor as Reception. You can come in any time during the College day to find one of our friendly Learning Mentors who will be able to help you or talk to you if you want to discuss something on your mind.

Over the next few slides you will find a pictorial guide of the college

We know that the prospect of starting College can feel scary, nerve wracking, and exciting. This short guide will help you to understand everything you need to know about Study Support at Farnborough 6th.

We often get visits from the therapy dogs!



Our sensory room - a place to decompress if you need time out



# Welcome to The Sixth Form College Farnborough



Starting a new school/college can be a daunting experience, which some people may find stressful. However everyone is in a similar position and in time it **will** become easier.

This guide will help you to visualise the various buildings and services available, including the location of eateries, Learning Resource Centres, gym, places to make new friends and catch up with some old ones.

College can feel like a scary place but there is plenty of support available if you're feeling overwhelmed, lost or just need someone to talk to. **Study Support** is available for you to pop in at anytime, our doors are always open during the college day and the **College Counsellor** is available for drop in sessions.

# MAIN RECEPTION, COLLEGE SHOP AND REGISTRY



This is the entrance to **Main Reception** and one of the many entry points into the College.



**Registry** is on the ground floor of the Bagnall Building, just along the corridor from Main Reception.

Registry is responsible for timetabling and exams.



The **College Shop** is on the ground floor in the Bagnall Building opposite the Library.

They are open weekdays from 8.45am to 1:30pm (term time only).

Here you can buy any stationery you need for your college day.



# BAGNALL, RANSON AND THE JOHN GUY BUILDING



**The Bagnall Building** houses Languages, Business, Economics, Accountancy, Geography, History, Law, Politics, Registry, Philosophy, Study Support, Main Reception, Timeout and Student Services.



**The Ranson Building** is home to our Maths department. It is the building next to the Bagnall building.



Inside **The John Guy Building** you will find Physics, Graphics, Fine Art, Photography, Textiles and Computer Science.



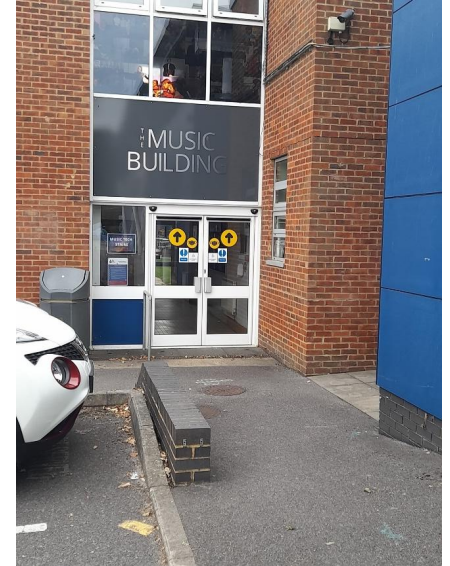
# SCIENCE, SPORT AND MUSIC



Biology and Chemistry can be found in the **Science Building**, which is opposite the Bagnall Building.



The **Sports Complex** has two sports halls and a fitness suite.



The **Music Building** houses a wide variety of instruments, and many soundproofed rooms for practice.

# THE PROSPECT THEATRE, WHITEHOUSE AND BEACON



**The Beacon Building** houses English, Media, Criminology and Film studies.

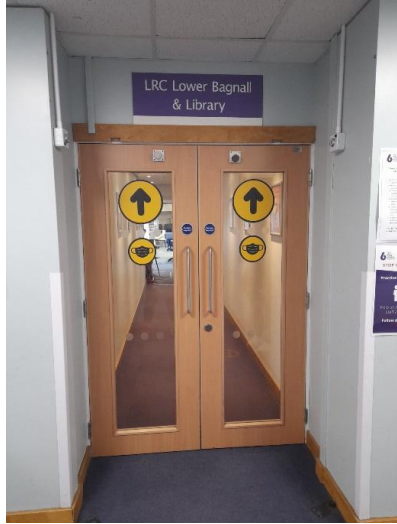


In **The Whitehouse Building** you will find one of our three LRCs, LRC Whitehouse, plus subjects such as Sociology, Health & Social Care and Psychology.



Inside the **Prospect Theatre** there are two Performing Arts/Drama studios and a fully equipped theatre auditorium.

# THE LEARNING RESOURCE CENTRES (LRCs)



We have **three Learning Resource Centres (LRCs) and a Library.**

- LRC Lower Bagnall (ground floor in the Bagnall Building next to the Library)
  - LRC Upper Bagnall (first floor in the Bagnall Building)
  - LRC Whitehouse in the Whitehouse Building.

Here you can find fully equipped computer suites and plenty of resources for your studies.  
You can also find silent study areas in the LRCs in the Bagnall Building.



This is a typical timetable. Along the top are the days of the week and along the left hand side are the time periods that the College day is split into.  
A normal college day is from 9.00am to 4.10pm

# TIMETABLE EXPLAINED

Period	Monday	Tuesday	Wednesday	Thursday	Friday
09:00 1 10:30	A A level Biology Biology 2	E A level Mathematics Mathematics 7	D Study period	F Study period	C A level Business Business 5
10:45 2 12:15	B Study period	F Study period	C A level Business Business 5	E A level Mathematics Mathematics 7	D Study period
12:15 3 13:00	H	H	H	H	H
13:00 4 14:30	C A level Business Business 5	B Study period	G Study period	A A level Biology Biology 2	E A level Mathematics Mathematics 7
14:40 5 16:10	D Yr 1 Tutorial J Tutorial 3 Yr 1 One-to-One J Tutorial 3	A A level Biology Biology 2	G Study period	B Prospects Diploma Simon Jarvis Lecture Theatre	F Study period
After 6 16:10	I	I	I	I	I

Typical A level timetable

- The top line is the subject.
- The second line contains the name of the teacher, teaching your lesson.
- The third line contains the location of your lesson.
- You may have some study periods on your timetable. During these slots you can use one of the LRC suites based in Bagnall or Whitehouse to complete independent study.

## PLACES TO EAT AND MEET WITH FRIENDS



We have two places available for you to eat your packed lunches and catch up with friends,  
**The Courtyard** and **The Greenhouse**.

# PLACES TO PURCHASE FOOD AND DRINK



We have three **cafés** on site:

- **Timeout** serves hot lunches and a small selection of sandwiches.
- **Shades** serves hot snacks, made to order sandwiches and Costa Coffee.
- **Café D** serves Starbucks coffees and hot snacks.



# PLACES TO GO WHEN YOU NEED SUPPORT



This is **Study Support**, just along the corridor from Registry. Come here for 1-1 support on essay writing, time management and study skills. This is also a safe space you can escape to if you're feeling overwhelmed.

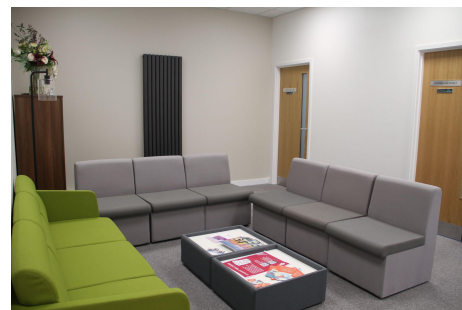
# PLACES TO GO WHEN YOU NEED SUPPORT



The **Medical Room** is on the first floor of the Bagnall Building next to Student Services. The Medical Room can be used when you are feeling unwell. If you need to go home because you are feeling unwell you must report to the College Nurse for assessment and signing out. You cannot go home without seeing the Nurse first.



**The Wellbeing Centre** is located on the ground floor of the Bagnall Building. They offer wellbeing coaching appointments with a mental health specialist or regular 1-1 counselling appointments.



# PLACES TO GO WHEN YOU NEED SUPPORT



**Student Services**, found on the first floor of the Bagnall Building, provide information on transport links to and from College. They can give you bus and train timetables, organise car parking permits and lend temporary lanyards.



The **tutor corridor** is where all of your Personal Tutors will be based. They are available by appointment, to arrange an appointment please email them.



**Careers advice** can be found at the end of the staff car park, and also can be accessed via the Sports Complex.